

# LET'S **ECHO** TOGETHER TO EMPOWER COMMUNITIES



ANNUAL REPORT  
**2024-25**

# Our Guiding Values



## Service To The Underserved

Committing our efforts to building “a better society, one that is more just and more loving.”



## Democratising Knowledge

Sharing resources, knowledge, time and talents freely across the organization, the movement, and the world.



## Trust And Respect

Working from a place where we give the best of ourselves, we assume the best of others, and we communicate openly, honestly, and with regard for others.



## Excellence And Accountability

Maximizing our individual and organizational potential, contributing to the best of our ability, seeking to be better, and owning our mistakes.



## Joy Of Work

Nurturing an environment that allows us each to do what we do best and balance our energy.



## Teamwork

Recognizing that achieving our ambitions requires collective contribution and collaborative effort and cultivating a culture where we support each other, pitch in, and work together.



## Innovation And Learning

Fostering continuous evolution and new creative ideas that have the power to change the world through learning and experimentation.

# TABLE OF CONTENTS

» A Message from Our Chairperson & Executive Director	2
» Trustees Of The Board	4
» Meet the ECHO India Team	5
» About ECHO India	6
» The Challenges	7
» The ECHO Solution	8
» Impact and Outreach	10
» Highlights of 2024-2025	12
» Awards & Recognitions	15
» Healthcare	16
» National Programmes Using ECHO Model	17
» Spotlight	22
» Education	24
» Agriculture, Livelihoods & Climate	29
» Research on the ECHO Model	33
» Events & Conferences	34
» ECHO Impact Story	36
» Words of Appreciation	38
» iECHO	39
» Impact in Motion	40
» Media & Publications	41
» Financial Highlights FY 2024-25	42
» Our Partners	44
» Key Supporters	45

# From the Chairperson's Desk

Dear Colleagues, Partners, and Friends,

As I reflect on the year gone by, I am filled with a profound sense of pride and gratitude. The year 2024-25 stands out as a period where our collective perseverance, innovation, and commitment translated into tangible achievements on the ground. One of the defining milestones of the year was being conferred with the Best Public Health Initiative Award at the Financial Express Healthcare Awards, recognizing our efforts to strengthen public health systems through capacity-building and collaborative learning. We are deeply humbled by this honour, which stands as a testament to the dedication of our teams, partners, and the frontline professionals we work alongside.



We are also privileged to have received the HCLTech Grant Award for Best Practices in Health for our work in comprehensive primary healthcare in Nagaland, affirming the importance of strengthening rural healthcare ecosystems through structured mentorship and capacity-building. This project has facilitated the strengthening of healthcare systems in the Northeast, a region rich in resilience yet historically underserved. Focused on high-burden states, the program trained pediatricians and medical officers to deliver standardized, prevention-focused care, laying the foundation for a stronger, more sustainable response to genetic blood disorders.

Beyond these milestones, our communities of practice continued to thrive among doctors, nurses, teachers, and local leaders, reaffirming that when knowledge moves freely, transformation takes root. Every session, every conversation, and every connection this year strengthened our belief that solutions must emerge from within communities themselves. As we look ahead, our focus will be on strengthening the models we have built, expanding our partnerships, and continuing to foster environments where every learner has the opportunity to become a leader. In closing, I extend my heartfelt gratitude to our team, our partners, our supporters, and most importantly, the countless individuals and communities who have trusted us to walk alongside them. Your trust is our greatest responsibility, and your belief in our mission propels us forward. Together, we will continue to build a future where knowledge is not hoarded but shared, not confined but multiplied, a future where learning truly knows no bounds.

With warm regards and renewed commitment,

**Dr. (Col) Kumud Rai, SM**

Chairperson & Managing Trustee, ECHO India

# From the Executive Director's Desk

Dear Partners, Patrons, and Readers,

At ECHO India, our mission has always been rooted in service, in the belief that knowledge and care must reach every individual, especially those who have long remained on the margins. This commitment lives in every aspect of our work, whether it is strengthening comprehensive primary healthcare in rural and tribal belts or ensuring access to life-saving TB care across the mountainous regions of Kashmir.

Through such initiatives, we continue to bridge the gaps created by distance, terrain, and systemic inequities, bringing quality healthcare, education, and livelihood opportunities to communities that are often overlooked. Our model rests on the strength of a trusted human network, one that empowers local providers through mentorship, collaboration, and continuous learning, ensuring that expertise and compassion flow to where they are needed most. The stories and milestones captured in this report reflect the impact of these collective efforts. They bear testimony to what becomes possible when knowledge is shared freely, when capacities are strengthened locally, and when the spirit of equity guides every action. You will read how ECHO's programs are not only helping improve outcomes but are also aiding in reshaping the very fabric of service delivery in some of the country's most challenging geographies.

Equity is not a milestone but a daily choice. It calls upon us to listen, to act, and to stand with communities that have been left behind. It reminds us that no region is too far, no terrain too difficult, when we work together with trust, respect, and shared purpose. Thank you for your continued partnership in moving knowledge, not people. Together, we are helping to create a future where every individual, no matter where they live, has the chance to thrive.

Warm regards,

**Dr. Sunil Anand**

Executive Director, ECHO India



# Board of Trustees

Meet the Visionaries Driving the ECHO Movement

## Trustees



**Dr. (Col) Kumud Rai, SM**

Chairperson & Managing  
Trustee, ECHO India



**Dr. Soumya Swaminathan**

Chairperson, M S Swaminathan  
Research Foundation  
Former Chief Scientist,  
World Health Organisation (WHO)



**Dr. Arvind Lal**

Padmashree Awardee  
Chairman & Managing Director,  
Dr. Lal PathLabs



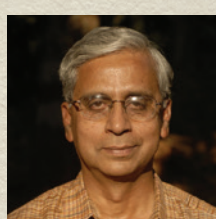
**Dr. Subrat Acharya**

Padmashree Awardee  
Pro Chancellor, KIIT University  
Bhubaneswar



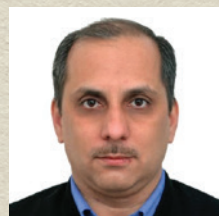
**Meenakshi Datta Ghosh**

Former Secretary,  
(Ministry of Health & Family Welfare)  
Government of India



**Dr. Hanumappa Sudarshan**

Padmashree Awardee  
Founder and Secretary, Karuna Trust



**Amit Midha**

Associate Vice President,  
Operations & Unit Head  
Max Healthcare

## Leadership



**Dr. Sunil Anand**

Executive Director  
ECHO India



**Surojit Chattoraj**

Chief Operating Officer  
ECHO India

# Meet the Senior Team

**Dr. Sandeep Bhalla**  
Vice President, Projects

**Mr. Sanjay Joshie**  
Vice President, Projects

**Ms. Sonal Mehta**  
Vice President, Projects

**Mr. Harshmit Singh**  
Associate Vice President, Finance & Accounts

**Ms. Pooja Virmani**  
Associate Vice President, Human Resources

**Dr. Karan Rai**  
Senior General Manager, Monitoring, Evaluation & Research

**Mr. Babu Entoor Ramachandran**  
Senior General Manager, Projects

**Dr. Haresh Chandwani**  
General Manager, Projects

**Mr. Tarun Kumar**  
General Manager, Training & Projects Support

**Ms. Mini Singh**  
General Manager, Grants & Fundraising

**Ms. Paromita Das**  
General Manager, Projects

**Ms. Deepa Jha**  
General Manager, Projects

**Mr. Arunkumar Selvaraj**  
General Manager, Projects

**Mr. Ankit Kumar**  
General Manager, Technology Projects

**Ms. Anila Goswami**  
Deputy General Manager, Projects

**Ms. Aditi Sharma**  
Deputy General Manager, Projects

**Mr. Gaurav Rewari**  
Deputy General Manager, Projects

**Mr. Rohit Dheer**  
Deputy General Manager, Technology Projects

**Mr. Ankit Nakra**  
Deputy General Manager, Technology Projects

# About ECHO India

Established in 2008, ECHO India is a not-for-profit trust that is transforming how knowledge is shared and sustained across some of the most underserved communities in the country. Founded on the belief that knowledge should move and not people, ECHO India creates trusted human networks that connect grassroots providers with expert guidance, peer support and ongoing mentorship. These networks empower local professionals such as doctors, nurses, ASHAs, teachers and community workers to deliver timely and effective solutions within their own communities.

2008	2014-17	2018	2019	2020-24
ECHO India established as a Not-for-Profit Trust to foster vibrant learning communities in healthcare and education	NIMHANS*, NICPR**, and NITRD*** partner with ECHO India to start their first capacity-building programs	NTEP adopts the ECHO Model for capacity-building to manage MDR-TB	NIMHANS and NICPR partnerships expand, and both evolve as SuperHubs	400+ hubs, 1000+ completed programs
		National Health Mission (NHM) starts mentorship programs for Health & Wellness Centers		Ramped up extensively to respond to COVID-19 challenge
	ECHO India launches first hub in Education at Ambience Public School	ECHO partners with NHSRC**** and launches first program under Ayushman Bharat	ECHO India signs an overarching MoU with the Ministry of Health & Family Welfare (MoHFW)	Signed MoU with Jal Jeevan Mission, Ministry of Jal Shakti  Signed MoU with Ministry of Agriculture & Farmers' Welfare

\* National Institute of Mental Health and Neuro-Sciences

\*\* National Institute of Cancer Prevention and Research

\*\*\* National Institute of TB and Respiratory Diseases

\*\*\*\* National Health Systems Resource Centre

At the heart of ECHO India's work is the concept of **"All Teach, All Learn"**. This philosophy fosters a deeply collaborative and inclusive learning environment where both formal expertise and lived experience are equally valued. Through virtual communities of practice, participants come together to share cases, ask questions and solve problems collectively. This process not only builds knowledge and confidence but also cultivates a shared sense of purpose and belonging. All of ECHO India's programs are supported by iECHO, a digital platform that enables structured, high-frequency and interactive learning sessions across geographies.



This model allows for rapid scaling and ensures that critical knowledge reaches those who need it most, without requiring them to travel or leave their work settings. ECHO India envisions a future where access to care, education and opportunity is not determined by location or privilege. Its mission is to build strong and resilient systems by equipping frontline providers with the knowledge, tools and community they need to lead change from within. By fostering trusted human networks and embracing the spirit of **"All Teach, All Learn"**, ECHO India is creating a more inclusive and responsive India, one conversation at a time.

# The Challenge

## Healthcare

India faces a growing burden of both non-communicable and infectious diseases. Conditions such as heart disease, cancer, diabetes, and respiratory illness now account for over **63% of deaths** (Ministry of Health and Family Welfare, National Health Profile), **while 26% of global tuberculosis cases occur in India** (World Health Organization, Global TB Report 2023). Most remain undiagnosed at the primary care level due to limited screening and training.



Only **13% of rural Indians have access to a functional primary facility** (Ministry of Health and Family Welfare, Rural Health Statistics 2021), and families often travel long distances for basic treatment. Persistent gaps in infrastructure, awareness, and workforce capacity point to the need for continuous training and mentoring of healthcare providers to ensure timely and equitable care.



## Education

Learning outcomes remain low despite increasing school enrolment. **India faces a shortfall of more than one million teachers** (Unified District Information System for Education Plus, 2021–22), and over half of Grade 5 students lack foundational literacy and numeracy skills (National Achievement Survey, 2021). Teachers, particularly in rural areas, have limited access to ongoing professional development and mentorship.



**Traditional teaching methods continue to dominate**, while school leaders often lack training in management and innovation. Weak early learning systems and limited attention to student well-being deepen learning gaps, highlighting the need for continuous teacher capacity building and support networks (National Education Policy, 2020).



## Livelihood & Agriculture

Rural livelihoods remain vulnerable to climate change, skill gaps, and weak institutional support. Climate-related events cost India about 4.3% of GDP each year (Economic Survey of India, 2021–22), while **86% of farmers are smallholders with limited access** to credit, markets, and modern practices (Agriculture Census of India, 2015–16).



Only 5.5% of the workforce has formal skill training (Periodic Labour Force Survey, 2022–23), and **among rural women, 73% work in agriculture but just 13% own land** (National Family Health Survey–5, Ministry of Health and Family Welfare). Limited mentorship and fragmented training programs prevent rural workers, especially women, from achieving sustainable livelihoods, underscoring the need for structured capacity-building systems.

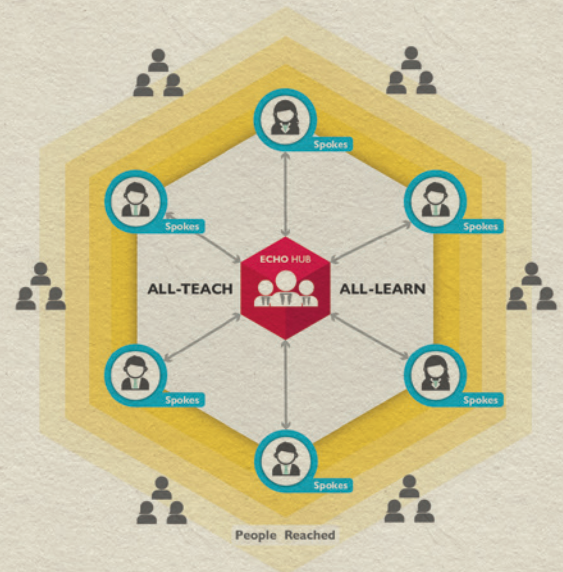


# The ECHO Solution

The ECHO Model (Extension for Community Healthcare Outcomes) was born from a simple but powerful idea that knowledge should be shared, not hoarded. It bridges the gap between expertise and access by virtually connecting specialists with on-ground professionals, enabling them to learn, collaborate, and solve real-world challenges together.

Built on a hub and spoke knowledge-sharing structure, ECHO transforms traditional training into guided practice, where knowledge flows in all directions. Through regular virtual sessions, participants discuss real-life cases, exchange ideas, and co-create solutions, embodying ECHO's guiding philosophy, "All Teach, All Learn."

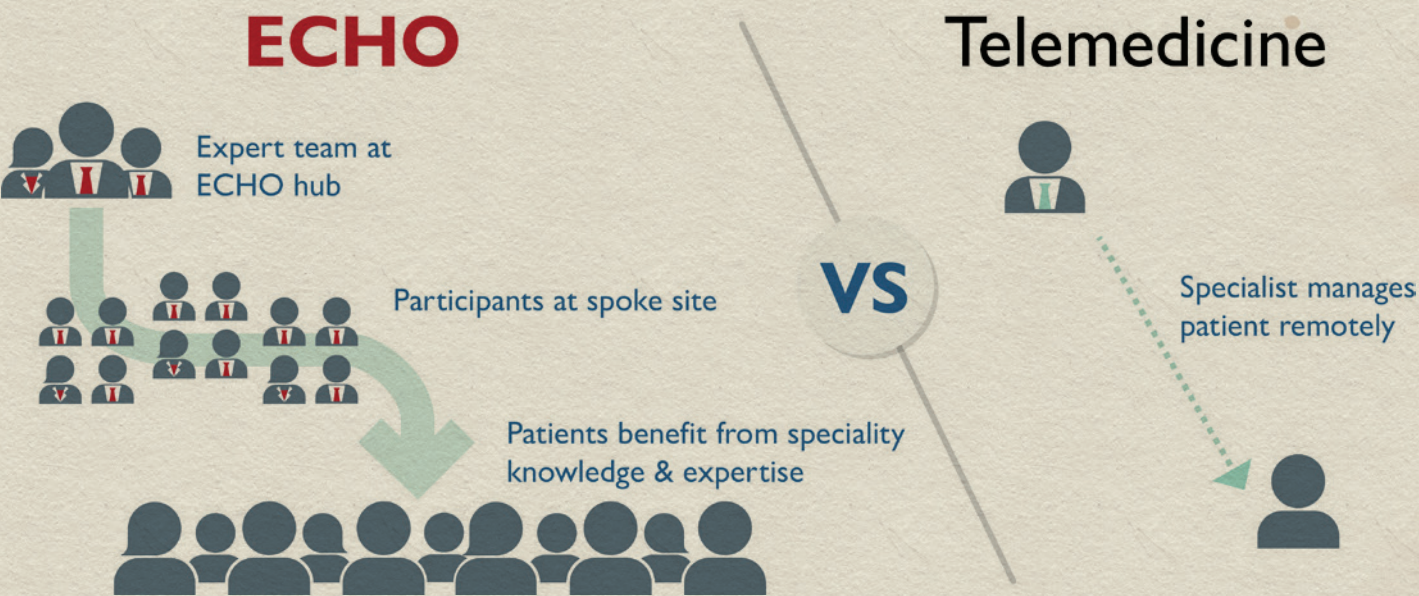
Originally developed to strengthen healthcare systems, ECHO has evolved into a sector agnostic framework that drives impact in education, livelihoods, mental health, and climate resilience. Whether supporting teachers, upskilling frontline workers, or enabling community leaders, ECHO adapts seamlessly to local contexts to achieve equity at scale.



The model is built on four foundational principles:

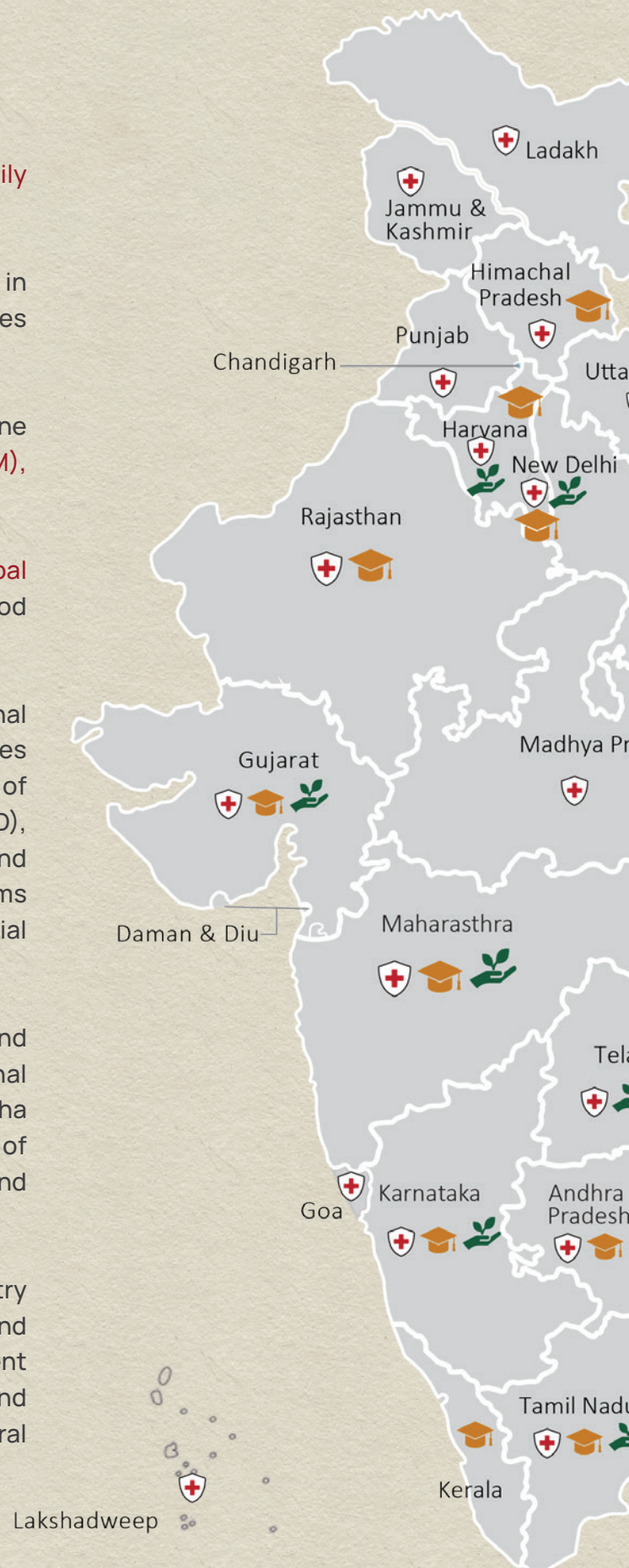


At its heart, ECHO is more than a model. It is a mindset that reimagines learning as a shared and inclusive process rooted in trust, humility, and reciprocity. By valuing lived experience alongside formal expertise, it creates vibrant circles of collective growth, ensuring that no community stands alone and that the power to transform lives remains where it belongs, within the community itself.



# Impact and Outreach

- » Signed partner of the **Ministry of Health & Family Welfare, Government of India** since 2019
- » Supporting the **National Health Mission (NHM)** in the majority of Indian states and Union Territories (UTs)
- » Expanded into Water, Sanitation and Hygiene (WASH) by signing with **Jal Jeevan Mission (JJM)**, **Ministry of Jal Shakti** in July 2023
- » Signed a partnership with the **Kolkata Municipal Corporation (KMC)** to strengthen early childhood education.
- » **Key Institutional Partners in Healthcare:** National Institute of Mental Health and Neuro-Sciences (NIMHANS), Pallium India, National Institute of Tuberculosis and Respiratory Diseases (NITRD), National Institute of Cancer Prevention and Research (NICPR), National Health Systems Resource Centre (NHSRC), and Tata Memorial Hospital (TMH)
- » **Key Institutional Partners in Education:** Jharkhand Education Project Council, Andhra Pradesh National Green Corps, NHM West Bengal, Samagra Shiksha Assam, Department of Education, Government of Tamil Nadu, Directorate of Education, Goa, and Muktangan
- » **Key Institutional Partners in Livelihood:** Ministry of Jal Shakti, Department of Agriculture and Farmers' Welfare, Government of India, Department of Irrigation, Assam, Department of Panchayats and Rural Development, West Bengal, Aga Khan Rural Support Programme





**530+**  
Hubs



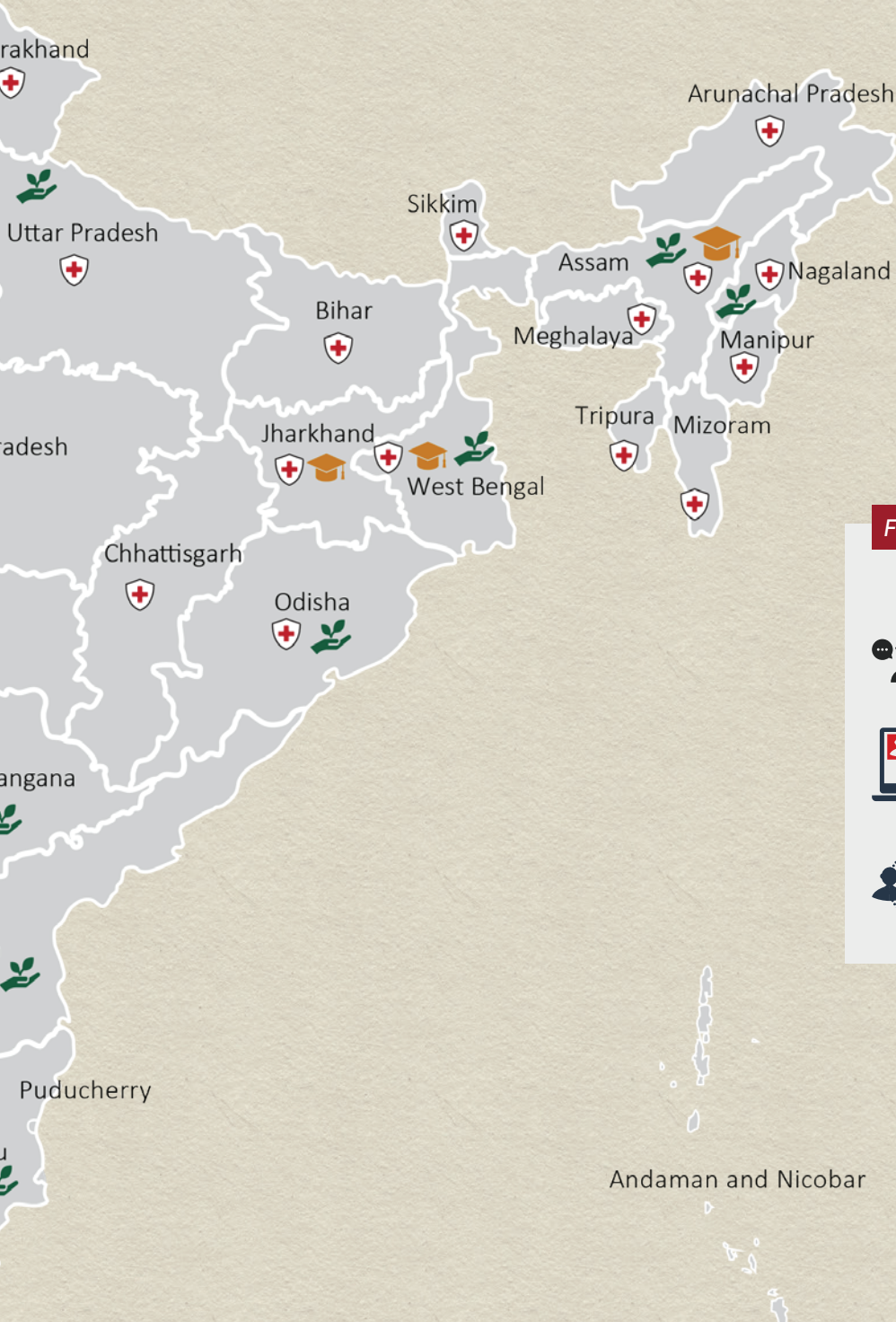
**24,66,500+**  
Attendances



**34,370+**  
Sessions



**28 States,**  
**7 Union Territories**



**FY 2024-2025**



**122**  
Hubs

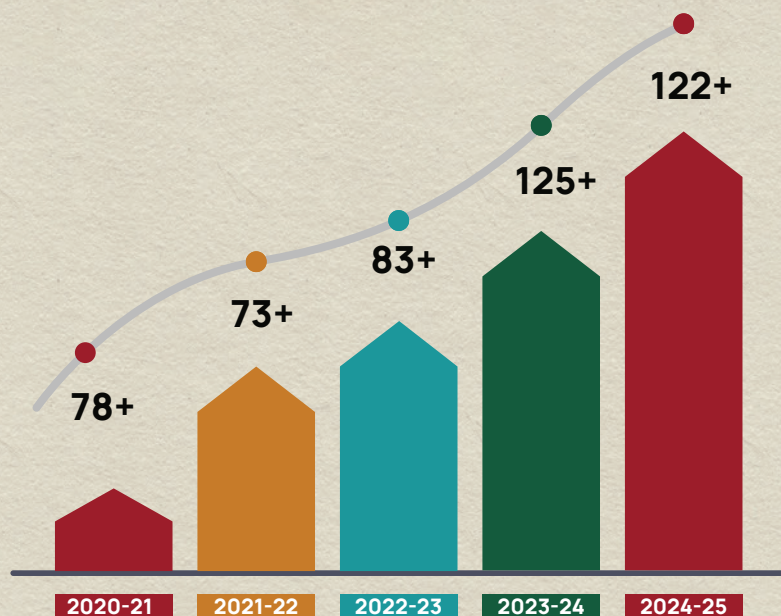


**9,144**  
Sessions



**7,31,814**  
Attendances

# Highlights of 2024-2025



Over the past five years, the steady growth in ECHO programs reflects a deepening commitment to building capacity and strengthening systems through knowledge-sharing. From **78+ programs in 2020-21** to **over 122+ in 2024-25**, this upward trend highlights the sustained efforts of our partners and teams working together to expand access, improve outcomes, and support communities across sectors.



## Key Government and Institutional Partnerships

The **Department of Agriculture and Farmers' Welfare, Government of India**, signed an MoU with ECHO India to enhance the capacity-building of Frontline Extension Workers (FLEWs), including Krishi Sahayaks, Krishi Mitras, and progressive farmers.



The **Department of Panchayats and Rural Development, Govt. of West Bengal**, collaborated with ECHO India to facilitate various capacity-building initiatives focused on Water Sanitation & Hygiene (WASH), social welfare, and enhancing livelihoods across communities, with an aim to address on-ground challenges

The **Department of Irrigation, Government of Assam**, and ECHO India initiated a transformative partnership to build the capacities of 5,000+ frontline professionals in the irrigation sector, covering key thematic areas like irrigation development and water governance.



Formalized our partnership with **National Health Mission (NHM) Telangana**, signifying a shared commitment to addressing critical public health challenges, particularly Non-Communicable Diseases (NCDs).

The **Department of Women and Child Development & Social Welfare (WCD), Government of Jharkhand**, and ECHO India partnered to facilitate various capacity-building initiatives focused on addressing issues related to women, children, and social welfare, aiming to strengthen the ecosystem.



The **Jammu & Kashmir Medical Council (JKMC)** joined hands with ECHO India. Through the ECHO Model of case-based learning, the programs will deliver expert-led mentorship to local healthcare providers, cultivating a robust knowledge-sharing network.

In an effort to strengthen teacher capacity and enhance learning outcomes across Goa, the **Directorate of Education, Goa**, partnered with ECHO India to support professional development and peer-to-peer learning. This collaboration, aligned with the National Education Policy, aims to drive meaningful change in the education sector.





## Enhanced Engagement with Stakeholders



Organized a National Roundtable Summit on Cancer Prevention, Detection, and Awareness with Tata Memorial Centre (TMC) Mumbai. Addressing the theme 'Advancing Cancer Prevention: Innovations and Capacity Building', the collaborative initiative brought together healthcare officials, medical experts, and key stakeholders to discuss critical strategies for cancer prevention.



Supported the launch of a joint initiative by the Ministry of Health & Family Welfare, Govt. of Karnataka, which aims to advance efforts to eliminate cervical cancer in the state. Shri Dinesh Gundu Rao, Hon'ble Minister of H&FW, Karnataka, and Sri. Sivakumar K.B (IAS), Commissioner, Dept. of H&FW, Karnataka, inaugurated the event in the presence of key senior officials and dignitaries. In collaboration with ECHO India and other non-profit organisations, the Karnataka consortium for cervical cancer elimination aims to strengthen healthcare professionals' capacities for effective prevention and management.

# Awards & Recognitions

In our journey to build stronger, more resilient health systems, ECHO India's efforts have been acknowledged on prestigious platforms across the country. These recognitions highlight the on-ground impact of our work and the transformative potential of capacity-building in driving better health outcomes at scale.



We were honoured with the **Best Practice Award** in the Health Category at HCL Foundation's flagship event Partnering for Change 2025. Celebrating the theme "**Expanding Horizons: Scaling Impact**", the award recognises our **Comprehensive Primary Healthcare (CPHC)** project in Nagaland, where over 200 Community Health Workers (CHWs) were mentored and trained through the ECHO Model. These CHWs are now equipped to deliver quality care at the last mile, addressing critical local health challenges and bridging persistent service gaps in underserved communities.



**At the Financial Express Healthcare Awards 2025,** ECHO India was recognized in two significant categories.

Dr. (Col) Kumud Rai, Chairperson and Managing Trustee, was awarded '**Healthcare Icon of the Year**' for his visionary leadership and enduring contribution to advancing equitable healthcare delivery across India.



ECHO India also received the '**Best Public Health Initiative**' award, recognizing our consistent efforts to strengthen public health systems through collaborative, scalable, and knowledge-driven interventions.



iECHO, our digital backbone, was shortlisted among the "**Top 50 Designs in India**" under the "**Design for Social Impact**" category at the CII Design Excellence Awards, endorsed by the India Design Council and the World Design Organization (WDO). iECHO powers the delivery of our programs, enabling seamless, real-time access to expert guidance, learning, and support for thousands of frontline professionals across the country.

These recognitions not only validate the transformative nature of our work but also reinforce our commitment to leveraging innovation, both human and digital, for strengthening systems and reaching lives.

# Healthcare

In healthcare, the ECHO model strengthens systems by connecting a wide range of health professionals including rural nurse practitioners, community health workers and experienced specialists through virtual communities of practice that enable continuous mentoring, collaborative learning and problem-solving. These sessions provide a platform for sharing real-world cases, receiving expert guidance and learning from peers, empowering healthcare providers across both rural and urban settings to improve their skills and deliver better care.



Our approach addresses the critical shortage of specialists and the uneven distribution of medical expertise by equipping primary care providers with the knowledge and support they need to respond to complex health conditions in their own communities. This decentralised model helps reduce dependency on referrals, improves early intervention and strengthens service delivery at the first point of contact. The Ministry of Health and Family Welfare, Government of India, has endorsed the ECHO model as the official training platform for healthcare workers across the country in several programs. It has been instrumental in national programs focused on COVID-19 response and the management of non-communicable diseases. This recognition is a testament to the model's effectiveness in scaling knowledge and enhancing frontline capacity.

ECHO India's impact is made possible through strong collaborations with 29 state National Health Missions, municipal corporations, state and national nursing councils and leading medical institutions. These include All India Institute of Medical Sciences (AIIMS), National Institute of Mental Health and Neurosciences (NIMHANS), Pallium India, the National Institute of Tuberculosis and Respiratory Diseases (NITRD), National Institute of Cancer Prevention and Research (NICPR), Tata Memorial Hospital (TMH) and Postgraduate Institute of Medical Education and Research (PGIMER). Together, these partnerships are building a healthcare system that is more equitable, responsive and resilient by making specialised knowledge accessible to all providers, regardless of location.

# National Programmes

## Using ECHO Model

Following an overarching MoU with Ministry of health and family Welfare, several National healthcare programs have incorporated the ECHO Model for capacity building.



**National Tuberculosis Elimination Program (NTEP)**



**National Viral Hepatitis C Program (NVHCP)**



**Capacity Building at Primary Level (PMJAY)**



**National Cancer Screening Program (NCSP)**



**National Mental Health Program (NMHP)**



**National Program on Prevention and Control of Non-Communicable Diseases (NP-NCD)**

## Key Institutional Partners

ECHO India has partnered with the country's apex healthcare institutions to drive specialty medical knowledge dissemination to frontline healthcare workers.

### National Institute for Tuberculosis and Respiratory Diseases (NITRD)

National Institute for Tuberculosis and Respiratory Diseases (NITRD) and ECHO India are continuing their collaboration towards the goal of a TB-free India by 2025.



### National Institute of Mental Health and Neuro Sciences (NIMHANS)

To address the widening skills gap in mental health treatment, the National Institute of Mental Health and Neuro Sciences (NIMHANS) partnered with ECHO to disseminate critical knowledge to medical professionals.



### National Institute of Cancer Prevention and Research (NICPR)

Case-based mentorship programmes run by National Institute of Cancer Prevention and Research (NICPR) over the ECHO platform have helped participants conduct their own screening programmes and treat needy patients facing early symptoms of cancer.



### All India Institute of Medical Sciences (AIIMS)

In a concerted effort, so far 19 AIIMS have partnered with ECHO India. This strategic alliance aims to fortify health systems by leveraging the collective expertise and resources of these premier medical institutions, driving comprehensive healthcare transformation and system strengthening across the nation.



## Beta Thalassemia: Strengthening Systems, Healing Futures

Cumulative Data Since Inception



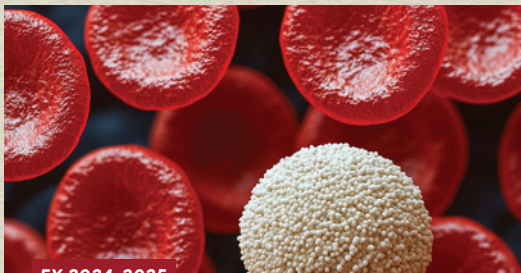
**04+**  
Hubs



**98+**  
Sessions



**3,350+**  
Attendances



FY 2024-2025



**04**  
Hubs



**33**  
Sessions



**1,883**  
Attendances

Beta Thalassemia is an inherited blood disorder affecting hemoglobin production and requiring lifelong care. Each year, 10,000–15,000 children in India are born with Thalassemia Major, many in areas lacking proper diagnosis and treatment. In 2022, ECHO India and Post Graduate Institute of Child Health (PGICH) Noida launched a national capacity-building program for prevention, early detection, and management of Beta Thalassemia and related disorders, in collaboration with the Indian Academy of Pediatrics and its Pediatric Hematology-Oncology Chapter, and with knowledge partners Kolkata Municipal Corporation (KMC), Brihanmumbai Municipal Corporation and National Health Mission Madhya Pradesh. These 3 hubs have mentored over 350 healthcare providers through interactive, case-based learning.

### Progress in 2024–25

#### Project Findings and Impact

Over 98% of participants said they would recommend the sessions, 92% found them effective, and 83% planned to apply their learnings. Self-rated “very knowledgeable” participants rose from 17% to 59%.

#### System and Clinical Outcomes

Kolkata Municipal Corporation (KMC) linked all UPHCs with thalassemia testing centres, conducted regular screening and prenatal testing (100 screened, 3 carriers identified), and set a goal to eliminate thalassemia in Kolkata by 2030. Participants reported improved clarity on screening protocols, better CBC interpretation, and stronger inter-hub collaboration in pediatric care.

## Cancer Care in India: Building Capacity, Restoring Confidence

Cumulative Data Since Inception



**46+**  
Hubs



**4,220+**  
Sessions



**1,39,400+**  
Attendances



FY 2024-2025



**59**  
Hubs



**973**  
Sessions



**54,052**  
Attendances

Cancer remains a major health challenge in India, with late diagnoses and limited access to specialized care. Under its nursing vertical, ECHO India's Breast and Cervical Cancer Prevention and Detection Program trained 200 nurses in screening, counselling, and referrals, through AIIMS College of Nursing and Rajkumari Amrit Kaur College of Nursing, strengthening early detection and community awareness. As a partner in the National Cancer Control Programme and a collaborator with the National Institute of Cancer Prevention and Research (NICPR), ECHO India's Cancer Care Bharat initiative builds national capacity, transforming how cancer care knowledge is shared, scaled, and sustained.

**Over the past year, Cancer Care Bharat has achieved key milestones across states and health system tiers:**

- » Launched programs in Assam, Mizoram, Gujarat, and Ladakh to strengthen Medical and Community Health Officers' capacity in cancer diagnosis, management, and survivorship.
- » Partnered with AIIMS Guwahati and Cachar Cancer Hospital and Research Centre for early detection training, improving peripheral providers' ability to identify and refer cases at treatable stages.
- » Introduced survivorship modules under the Ahmedabad Municipal Corporation, preparing urban providers to support patients beyond treatment.
- » Expanded palliative care training in high-need regions like Ladakh, in collaboration with the Trivandrum Institute of Palliative Sciences (TIPS).
- » Strengthened holistic cancer care nationwide, integrating diagnosis, nurse oncology, patient navigation, family care, and survivorship.

## Combating Cardiometabolic Syndrome:



08+  
Hubs



86+  
Sessions



5,060+  
Attendances



FY 2024-2025



08  
Hubs



78  
Sessions



4,327  
Attendances

### Timely Diagnosis, Lifesaving Impact

High blood pressure, diabetes, and obesity are increasingly affecting younger populations, adding to the burden of Cardiometabolic Syndrome (CMS) in India. To strengthen the primary care response, ECHO India launched the CMS ECHO Program with state National Health Missions and municipal corporations. The program builds the capacities of over 1500 Medical Officers across Gujarat, Karnataka, West Bengal, Maharashtra, Tamil Nadu, and Arunachal Pradesh through ECHO's Hub and Spoke approach.

It enables hubs to share knowledge, clinical tools, and best practices, helping healthcare providers review patient histories holistically and offer integrated, personalised care. This shift has led to better health outcomes, including the reversal of CMS-related symptoms and improved community well-being. Alongside training, a national webinar series further fosters dialogue, bringing together experts to explore scientific, social, and systemic strategies.

*"Earlier, Medical Officers were trained on a single area, one session on hypertension, another on obesity, or diabetes. But ECHO India's CMS program brings a combined approach. Now, doctors are not just treating blood pressure or blood sugar in isolation; they're considering the entire cardiometabolic profile of the patient. This shift has brought about a major change in how they think and manage patients."*

**Dr. Madhusudan, MSU Nodal officer, NVBDCP officer, MOH, BBMP**

## Empowering the Frontlines: Strengthening Primary Health Care Across India



94+  
Hubs



3,554+  
Sessions



2,36,880+  
Attendances



FY 2024-2025



64  
Hubs



1,008  
Sessions



90,520  
Attendances

*"During my shift, a woman came in with severe Postpartum Hemorrhage and critically low haemoglobin. Thanks to my ECHO training, I knew exactly what to do. We followed the protocol step by step and were able to save her life. It gave me the confidence to act quickly and effectively,"*

**- Mrs. Ayodhya Hande, Auxiliary Nurse Midwife, Maharashtra.**

To strengthen grassroots healthcare, ECHO India launched the Comprehensive Primary Health Care (CPHC) Program across Gujarat, Uttarakhand, Maharashtra, Madhya Pradesh, Andhra Pradesh, and Tamil Nadu. This initiative aims to build the capacities of over 2,000 frontline healthcare providers, including Community Health Officers (CHOs), Staff Nurses, ANMs, and ASHAs, by delivering contextual, case-based training through the ECHO Model. In April 2024, a new initiative with NHM Nagaland trained 200 Community Health Workers across 12 districts. Through expert mentorship and specialized training, the initiative bridged healthcare gaps and delivered life-saving care in remote areas.

The impact was clear, with a 6 percent rise in technical knowledge. ASHA workers shared that the training strengthened their medical knowledge and skills. Participants also reported improved confidence in managing conditions such as birth asphyxia using mucus extractors, screening pregnant women, and disseminating information on domestic violence and sexual harassment. A 5% improvement toward maternal and child health was documented. Impressively, 99% of participants shared that they are actively applying the skills gained through the training in their daily work.

## Long COVID: Extending Care Beyond Recovery

**14+** Hubs **136+** Sessions **8,300+** Attendances



FY 2024-2025

**04** Hubs **30** Sessions **2,463** Attendances

Long COVID occurs when symptoms persist weeks or months after recovering from acute COVID-19, including fatigue, breathlessness, neurological & psychological issues, and multi-system complications. Affecting 1 in 6 people (WHO), it poses a major public health concern, impacting daily functioning, mental well-being, and long-term health. Limited awareness among healthcare providers makes early identification and effective management essential. To address these gaps, ECHO India launched the Long COVID Program for healthcare professionals.

Virtual ECHO sessions were conducted for Medical Officers, in collaboration with Kolkata Municipal Corporation (KMC) and Brihanmumbai Municipal Corporations. The program offered nationwide webinar series providing didactic training, case-based learning, and expert-led discussions to improve clinical capacity in managing Long COVID.

### Key Findings

- » 79.33% of participants in the classic program and 73.29% in webinars found the content highly relevant to their work.
- » 86.59% (classic) and 76.75% (webinar) reported they would definitely apply their learnings in practice.
- » 98.88% (classic) and 91% (webinar) felt the sessions had the right mix of lecture and interactivity.
- » Participants reported increased self-confidence in areas like early detection, mental health screening, patient counselling, and community awareness.

## The Backbone of Healthcare: Empowering India's Nurses Through ECHO

**64+** Hubs **2,350+** Sessions **5,57,160+** Attendances



FY 2024-2025

**48** Hubs **550** Sessions **59,958** Attendances

From primary to tertiary care, nurses are often the first and sometimes only point of contact for patients. They offer care, comfort, and medical guidance, yet many lack access to the latest knowledge, hands-on mentorship, and specialized training. ECHO India is transforming nursing care by partnering with state departments, nursing councils, academic institutions, and hospitals. Through focused virtual programs, the ECHO Model equips frontline nurses with skills in antenatal care, breastfeeding support, palliative care, infection prevention, patient safety, chronic disease management, and early detection of breast, cervical, and oral cancers where timely intervention can be life-saving.

A key initiative under the nursing vertical, the ECHO India Breast and Cervical Cancer Prevention and Detection Program trained 200 nurses at AIIMS and Rajkumari Amrit Kaur College of Nursing. Nurses received mentorship in screening protocols, self-examination, patient counselling, and referral pathways, strengthening the frontline workforce to detect cancer early, educate communities, and support timely diagnosis with confidence, contributing to better health outcomes and a more resilient system.

The year-long Cancer Prevention, Detection, and Awareness Capacity-Building Program reached over 1,100 nurses across eight states. In partnership with All India Institute of Medical Sciences (AIIMS), Tata Memorial Hospital, Postgraduate Institute of Medical Education and Research and state nursing councils, it offered 30+ expert-led sessions and concluded with two National Roundtable Summits featuring policymakers and dignitaries, including Shri Dinesh Gundu Rao, Hon'ble Minister of Health and Family Welfare, Government of Karnataka, highlighting the growing national recognition of nurse-led cancer care. These programs extend beyond clinical training to build leadership, community, and purpose. Through case-based learning and the All Teach, All Learn approach, nurses gain not only skills but also the understanding to apply knowledge meaningfully in their communities.

# Tuberculosis

## Scaling TB Care Through Knowledge

Cumulative Data Since Inception



116+

Hubs



8,610+

Sessions



7,05,400+

Attendances



FY 2024-2025



113

Hubs



1,973

Sessions



1,72,600

Attendances

Tuberculosis remains one of India's most pressing public health challenges, requiring continuous capacity building at all levels. The National TB Elimination Programme has adopted the ECHO model for structured workforce training, with the National Institute of Tuberculosis and Respiratory Diseases guiding its nationwide expansion. ECHO hubs now enable thousands of TB providers to access timely mentorship and collaborative learning.

The CATCH (Community Health Officers Against Tuberculosis through Capacity-building & Hub-based learning) project was a year-long ECHO India pilot to strengthen TB care in Baramulla and Kupwara, Jammu & Kashmir. Two ECHO hubs at District TB Centres delivered a 12-module curriculum to 407 Community Health Officers (CHOs) on TB prevention, diagnosis, treatment, and stigma reduction. The project improved CHO knowledge and community engagement, leading to better screening, early detection, and counselling. Its success fostered collaboration across TB stakeholders and inspired replication in other states for wider impact.

Under USAID/India's iDEFEAT TB project, ECHO India, as a key partner of The Union-led consortium, established 78 hubs across 30 States and Union Territories, conducting 1,566 virtual training sessions for health volunteers and treatment supporters. The initiative strengthened national capacity for comprehensive TB and Drug-Resistant TB care, especially through Nodal DR-TB Centres in underserved regions.

# Reimagining Women's Health:

## One Session at a Time

Cumulative Data Since Inception



01+

Hubs



36+

Sessions



3,250+

Attendances



FY 2024-2025



02

Hubs



38

Sessions



3,258

Attendances

For too long, women's health has been viewed narrowly. The Women Wellness Program, implemented through the ECHO model, is changing that perspective. Through tailored learning modules, it has trained over 500 Medical Officers, Staff Nurses, Mid-Level Providers, and Village Health Nurses across Tamil Nadu's Dindigul and Tirupur districts. Participants gain critical knowledge on often unspoken or undiagnosed issues such as anemia, reproductive and endocrine disorders, mental health, respectful maternity care, and cancer and palliative care.

Beyond the sessions, the initiative engaged over 1,100 participants through webinars by national experts on gestational diabetes, pregnancy mental health, menopause, vaccination, and cardiometabolic impacts of pregnancy complications.

These sessions built a learning network among practitioners across regions. Central to this transformation is the newly established Key Opinion Leaders Consortium, comprising thought leaders from institutions like The Federation of Obstetric and Gynecological Societies of India (FOGSI), Indian Academy of Pediatrics (IAP), Indian Public Health Association (IPHA), and others, united by a shared vision to improve healthcare for women across India. With guidance from public health champions and in collaboration with Every Infant Matters, the consortium drives long-term goals, policy innovation, and coordination.

# Spotlight

## Child Drowning

### Tackling Drowning Risks Through Awareness and Action

In India, over one-third of drowning deaths occur among children under 15, mostly in rural areas near unprotected water bodies. To address this, the Child In Need Institute (CINI), with ECHO India, launched community awareness sessions in the Sundarbans using the ECHO Model. The program built local capacity in rescue and resuscitation, promoted fencing and safer practices around water, and empowered community leaders to champion child safety.



## HIV/AIDS

### Strengthening Care Through Knowledge Networks

For people living with HIV, access to informed, compassionate care is vital for treatment, safety, and dignity. ECHO India supports the National AIDS Control Organization and State AIDS Control Societies across multiple states to build the capacity of clinicians, counsellors, and care providers through ongoing case-based training. By standardizing practices and fostering empathy, these partnerships are strengthening systems of support and bringing India closer to a future where every person with HIV receives informed and respectful care.

## Tackling Leprosy

### with Compassion, Capacity, and Care

ECHO India, in collaboration with state governments, supports the National Leprosy Elimination Programme by strengthening the skills of healthcare workers across all levels. Through virtual learning, providers in remote areas connect with specialists, enhance diagnosis and management skills, and promote rehabilitation and mental health support. Beyond clinical training, the sessions nurture empathy and awareness, helping reduce stigma and ensuring every person affected by leprosy receives dignified, quality care.



## Maternal and Child Health:

### Nurturing Beginnings, Empowering Futures

*"I commend ECHO India for their innovative approach to empowering breastfeeding mothers. Their mentorship programs have created skilled lactation consultants across Tamil Nadu and strengthened maternal and child health," said Prof. Dr. (Mrs.) S. Ani Grace Kalaimathi, Registrar, Tamil Nadu Nurses and Midwives Council.*

From prenatal care to postnatal support, ECHO India works with nursing councils and leading institutions to build the capacities of nurses and frontline professionals who form the backbone of maternal and newborn care. Through continuous mentorship, case-based learning, and collaboration, these programs are helping create safer pregnancies, healthier deliveries, and more informed communities across India.

# Enhancing Mental Healthcare

## From Stigma to Support:

*"Earlier, people dismissed mental illness as just something in the mind," says Dr. Sandhya Thumsi, a counselor in the ECHO network. "Now, we can identify depression, anxiety, even schizophrenia, and we know what to do."*

Through the ECHO Model, mental healthcare is reaching those who need it most. In collaboration with national institutions, state governments, and local organizations, ECHO India is building the capacity of counselors, nurses, ASHAs, and psychooncologists, empowering them to respond with skill and empathy. Each session goes beyond training as it builds connection, confidence, and care. Mental health is no longer on the margins. It is part of the conversation and part of the cure.



## Neglected Tropical Diseases

### Strengthening the Response

India has made major progress against Neglected Tropical Diseases, yet some regions continue to face high burdens. To strengthen local response, AIIMS Deoghar and ECHO India launched a tele-mentoring program for Medical Officers and Community Health Officers in Jharkhand.

Through regular virtual sessions, providers gain expert guidance, improving their skills, confidence, and capacity to manage NTDs while building stronger, more resilient health systems.

## Non-Communicable Diseases

### Strengthening Frontline Response

ECHO India, in collaboration with state governments, supports the National Leprosy Elimination Programme by strengthening the skills of healthcare workers across all levels. Through virtual learning, providers in remote areas connect with specialists, enhance diagnosis and management skills, and promote rehabilitation and mental health support. Beyond clinical training, the sessions nurture empathy and awareness, helping reduce stigma and ensuring every person affected by leprosy receives dignified, quality care.



### Non-Alcoholic Fatty Liver Disease (NAFLD):

In 2024, ECHO India partnered with the Directorate General of Health Services, Haryana, to train Medical Officers and CHOs across 22 districts in screening, management, and counselling for NAFLD.

### Empowering Nurses:

Tailored programs have equipped nurses across India with knowledge on diabetes care, lifestyle modification, sexual and reproductive health, and patient counselling, promoting a nurse-led approach to care.

### Ayurveda for Hypertension:

In collaboration with the Directorate of AYUSH, Haryana, ECHO India supported the first Ayurveda-based program on hypertension management through Ayushman Arogya Mandirs, training CHOs in integrated approaches to care.

Together, these initiatives strengthen local capacity and drive sustained community action against the growing NCD burden.

# Education

In education, ECHO India is building a transformative movement that empowers teachers and school leaders through continuous mentorship, collaborative learning and real-time problem-solving. By creating vibrant knowledge-sharing networks, ECHO India helps educators navigate the complex and evolving needs of their classrooms while strengthening learning outcomes and fostering inclusive, student-centered environments.



The organisation focuses on upskilling, motivation and capacity building, enabling educators to address day-to-day challenges with greater confidence and creativity. It also strengthens educational leadership and management to foster innovation and drive systemic improvement, particularly in institutions serving underserved communities.

Through partnerships with government bodies such as **Samagra Shiksha Assam**, **Namma School Namma Ooru Palli** (Department of Education, Tamil Nadu), **Jharkhand Education Project Council**, and the **Directorate of Education, Government of Goa**, ECHO India is nurturing a national community of educators who learn together, innovate together, and teach together.

# Empowering Educators

## Transforming Classrooms. Enabling Every Child.

In India's classrooms, meaningful change starts with empowered teachers, yet many in underserved communities lack the collaborative support required to evolve with students' changing needs.

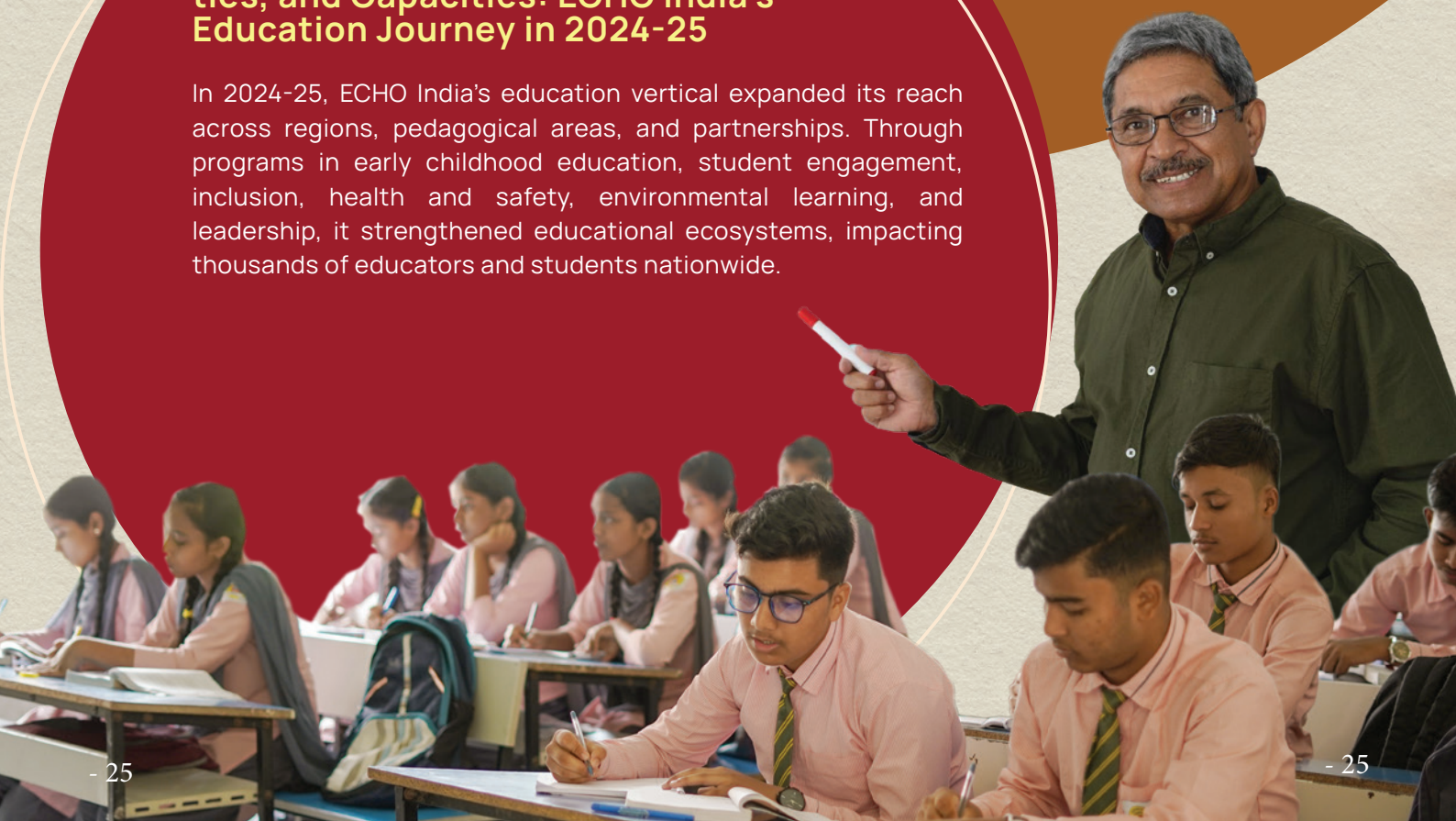
As educational demands grow, teacher support systems must evolve. ECHO India bridges gaps by connecting rural and urban schools, novice and experienced teachers, and grassroots challenges with systemic solutions. Mentorship becomes more than occasional guidance, it forms the foundation of professional growth.

Our focus areas are early childhood education, foundational literacy and numeracy, environmental learning, and social-emotional development. Through partnerships with state institutions and trusted organizations, we support educators in strengthening practice and driving systemic change.

When a teacher in Assam adopts innovative strategies or a school leader in Maharashtra implements inclusive reforms, education transforms at its core. ECHO breaks the isolation limiting teachers' growth by strengthening communities where educators reflect, collaborate, and innovate. By valuing contextual wisdom over one-size-fits-all solutions, it nurtures authentic voices, builds professional confidence, and unlocks potential. The impact extends beyond classrooms: when teachers thrive, every child gains the opportunity to flourish, regardless of geography or circumstance.

### Spanning Classrooms, Communities, and Capacities: ECHO India's Education Journey in 2024-25

In 2024-25, ECHO India's education vertical expanded its reach across regions, pedagogical areas, and partnerships. Through programs in early childhood education, student engagement, inclusion, health and safety, environmental learning, and leadership, it strengthened educational ecosystems, impacting thousands of educators and students nationwide.



# Program Initiatives

## Early Childhood Care and Education (ECCE)

Recognizing the foundational importance of early learning, ECHO India implemented programs focusing on children aged 0–6.



FY 2024-2025



03  
Hubs



38  
Sessions



1,337  
Attendances

Cumulative Data Since Inception



2+  
Hubs



96+  
Sessions



3,340+  
Attendances

Early childhood is where the foundations of thinking, social skills, and emotional resilience are first shaped. In India, many children still begin their learning journeys without access to stimulating environments, guided play, or developmentally appropriate instruction, affecting school readiness and long term outcomes. To strengthen this vital stage, ECHO India worked with partners such as the Muktangan Education Trust, Kolkata Municipal Corporation, and CINI, supporting teachers, sahayikas, and early childhood practitioners working with children aged 0 to 6.

Through ECHO's Hub and Spoke model, these partners and educators engaged in shared learning spaces where experts introduced practical child centred strategies and developmental insights. Practitioners learned to design joyful routines, understand milestones, observe behaviour closely, and use play, storytelling, and inclusive classroom practices to nurture holistic growth.

This emphasis on strengthening educator capacity has improved early learning environments across diverse settings, leading to better language development, motor skills, and socio emotional readiness among young children.

## Student Engagement and Foundational Learning



FY 2024-2025



02  
Hubs



46  
Sessions



1,943  
Attendances

Cumulative Data Since Inception



3+  
Hubs



124+  
Sessions



4,060+  
Attendances

**To improve teaching methodologies and student participation, ECHO India developed several key programs:**

Student engagement and strong foundational learning shape how children understand concepts, stay curious, and build confidence in the classroom. When teaching becomes interactive and meaningful, students develop deeper comprehension and are better prepared for future learning. Strengthening this area is therefore essential for improving overall learning outcomes.

To advance this focus, ECHO India worked with partners such as the Muktangan Education Trust and the Center for Learning and Empowerment, supporting teachers across subjects to adopt approaches that centre exploration, clarity, and participation. Through the Hub and Spoke model, educators learned practical ways to make science relatable to everyday life, teach mathematics through intuitive and concept based methods, and use inclusive pedagogies that encourage every student to engage actively.

These efforts have led to more responsive classrooms, stronger foundational skills, and improved problem solving abilities among students, reinforcing the importance of teaching practices that place understanding and inquiry at the heart of learning.

# Health, Safety, and Well-Being in Schools

Cumulative Data Since Inception



4+

Hubs



84+

Sessions



3,240+

Attendances



FY 2024-2025



05

Hubs



42

Sessions



1,440

Attendances

## Strengthening Health, Safety, and Emotional Well-Being to Help Students Thrive

Health, safety, and well being in schools form the foundation on which children learn, grow, and feel secure. When schools provide safe environments, support healthy habits, and prioritise emotional resilience, students are better able to focus, participate, and thrive. Strengthening this area is essential for creating learning spaces where every child can develop with confidence.

To support this focus, ECHO India worked with teachers, counsellors, and school facilitators across multiple settings to build their understanding of student welfare, emergency preparedness, and age appropriate health practices. Through the Hub and Spoke model, educators learned practical approaches to risk mitigation, hygiene and nutrition promotion, mental well being, and creating school environments that respond sensitively to the needs of children.

Working with partners in Tamil Nadu and West Bengal, these efforts strengthened school communities by improving awareness on physical and emotional health, building preparedness for emergencies, and equipping teachers to guide students toward healthier behaviours, including tobacco awareness. This collective emphasis on safety, health, and well being has contributed to more secure, supportive, and nurturing school environments.

# Inclusion and Environmental Education

Cumulative Data Since Inception



6+

Hubs



132+

Sessions



6,310+

Attendances



FY 2024-2025



04

Hubs



41

Sessions



1,935

Attendances

## Creating Accessible Classrooms and Real-World Learning for All Students

When classrooms include every learner and connect children with the world around them, learning becomes meaningful and grounded. Inclusion helps every child participate with confidence, while environmental awareness builds responsibility and care for the community. To strengthen this area, ECHO India worked with partners such as the Ummeed Child Development Centre and the Andhra Pradesh National Green Corps, equipping teachers to use disability inclusive practices and simple, practical methods to support diverse learning needs. Through the Hub and Spoke model, educators learned to create accessible classrooms and use tools that help all students engage fully.

In Andhra Pradesh, teachers also took part in environmental programs that promoted water conservation, biodiversity, and local ecological understanding. By using multimedia documentation and activity based approaches, they brought environmental learning into everyday lessons.

These efforts have helped schools become more inclusive while deepening students' awareness of the environment, supporting learning that is both equitable and rooted in real world understanding.

# Leadership Development in Education

Cumulative Data Since Inception



8+

Hubs



96+

Sessions



2,460+

Attendances



FY 2024-2025



02

Hubs



11

Sessions



455

Attendances

## Empowering School Leaders to Transform Teaching, Culture, and Student Outcomes

When school leaders are equipped to guide teams, shape culture, and strengthen teaching practices, entire learning environments improve. Strong leadership creates clarity, consistency, and a sense of purpose that directly influences how students learn and how teachers grow. To strengthen this area, ECHO India worked with partners such as the CM Schools of Excellence in Jharkhand and the Skill, Employment and Entrepreneurship Department in Assam, supporting principals, supervisors, and institutional heads through the Hub and Spoke model. Leaders learned to apply values based, strategic approaches to school management, foster collaborative staff practices, and align daily school functioning with long term educational goals.

These efforts have helped build leadership that is confident, reflective, and responsive, enabling schools to offer more supportive environments and better prepare students for both academic pathways and vocational futures. ECHO India's diverse programs and partnerships lay a strong foundation for improving teaching quality, learning outcomes, and educational access across India.

# Livelihoods

In livelihoods, ECHO India empowers farmers, Jal Doots, Pashu Sakhis, and agricultural extension workers by connecting them with subject matter experts who share best practices in sustainable farming, water conservation, animal husbandry, and climate-resilient livelihoods. These interactive learning sessions help rural workers make informed decisions, adapt to changing conditions, and strengthen food security and income generation in their communities.



Through targeted, high-impact capacity-building programs, ECHO India strengthens the efforts of government and civil society organisations by upskilling agricultural extension workers, Pashu Sahayaks, and Krishi Mitras, equipping them to link farmers with sustainable agricultural practices, improve livestock care, and foster resilience in rural ecosystems. Working across agriculture, climate change, WASH, and entrepreneurship development,

ECHO India collaborates with the **Ministry of Agriculture and Farmers' Welfare, Jal Jeevan Mission (JJM), Ministry of Jal Shakti, Irrigation Department, Government of Assam, and the State Sanitation Cell, Department of Panchayat and Rural Development, Government of West Bengal** to promote climate-resilient farming and community-led water and sanitation governance.

## Strengthening Rural India through Scalable, Systemic Capacity Building

In October 2023, ECHO India formally expanded into Agriculture, Livelihoods & Climate (ALC), marking a strategic extension of the ECHO Model beyond healthcare into one of India's most foundational sectors. The move was driven by an urgent need: despite being the backbone of India's economy, agriculture continues to be marked by fragmented extension services, poor knowledge dissemination, and vulnerability to climate shocks.

With over 47% of India's workforce engaged in agriculture and allied sectors, the absence of accessible, actionable, and localized knowledge hampers both productivity and resilience. Extension workers and grassroots professionals often lack regular, expert-led mentorship, limiting their capacity to support smallholder farmers in adopting sustainable and profitable practices.

The ALC vertical was established to close this gap. Leveraging ECHO's proven model of capacity building, our work in this domain aims to build the capabilities of middle- and grassroots-level professionals through structured virtual learning, mentorship, and community engagement.

### Notable Collaborations

- » Ministry of Agriculture & Farmers' Welfare
- » Extension Education Institutes (EEIs) in Hyderabad, Guwahati, Anand
- » National Institute of Agricultural Extension Management (MANAGE)
- » M.S. Swaminathan Research Foundation (MSSRF)
- » Grameen Foundation India
- » IndusTree Foundation
- » Foundation of Ecological Security (FES)
- » INREM Foundation
- » Vrutti



# Program Initiatives

## Agriculture

Transforming Agricultural Extension for a Changing Climate and Evolving Farming Needs



FY 2024-2025



10  
Hubs



704  
Sessions



42,172  
Attendances

Cumulative Data Since Inception



08+  
Hubs



720+  
Sessions



43,400+  
Attendances

Agriculture is increasingly shaped by shifting climate patterns, evolving crop practices, and the rapid rise of digital tools that influence everything from soil assessment to market access. Extension workers and scientific staff stand at the centre of this change, acting as the bridge between research institutions and farming communities. Strengthening this area therefore requires continuous learning that is practical, relevant, and grounded in real field challenges. Working with national partners such as the National Institute of Agricultural Extension Management (MANAGE), the Extension Education Institute in Hyderabad, Govind Ballabh Pant University of Agriculture and Technology (GBPUAT), ICAR institutes, and multiple state departments, ECHO India supported extension personnel across the country.

ECHO India formally established its ALC vertical through a pilot initiative, Cultivating Sustainable Livelihoods Solutions. The program aims to strengthen agri-based livelihoods in India by building the capacities of 300 frontline professionals and extension workers across the agri-sector. Through the Hub and Spoke model, they gained guidance on climate resilient agriculture, abiotic stress management, digital agriculture innovations, precision farming tools, and the formation and management of Farmer Producer Organizations. These collective efforts have created a more responsive and confident extension workforce, one that can support farmers in navigating uncertainties, improving productivity, and strengthening long term livelihood resilience.

## Gender Sensitization & Women

Recognising Barriers, Elevating Women, and Advancing Inclusive Rural Development



FY 2024-2025



05  
Hubs



109  
Sessions



4,620  
Attendances

Cumulative Data Since Inception



04+  
Hubs



108+  
Sessions



4,600+  
Attendances

Gender plays a defining role in who has access to knowledge, resources, and leadership in rural systems. Addressing these dynamics is essential for creating agricultural ecosystems that are equitable and genuinely community driven. ECHO India worked with MANAGE and GBPUAT to support educators and extension workers in understanding the gendered realities that shape participation in agriculture and allied sectors. Through the Hub and Spoke model, participants explored ways to recognise gender barriers in extension delivery, strengthen women's access to information, and promote women-led extension where women take on active leadership roles in training and community outreach.

Case based discussions helped surface invisible labour, unequal access to opportunities, and cultural expectations that limit women's involvement in agricultural decision making. These efforts have cultivated a more aware and responsive extension workforce, reinforcing the importance of gender inclusive development and women's leadership in rural communities.

# Water, Sanitation and Hygiene (WASH)

Cumulative Data Since Inception



08+ Hubs



286+ Sessions



12,000+ Attendances



FY 2024-2025



07 Hubs



202 Sessions



8,206 Attendances

## Creating Safer Water Access, Better Operations, and Stronger Community Participation

Safe water, reliable sanitation, and strong local governance are essential for community health, yet these systems often depend on frontline personnel who manage daily operations with limited support. Strengthening WASH systems means equipping these workers with both technical skills and problem solving capacity. ECHO India worked with Water for People, Aga Khan Rural Support Programme India, the Dr. Syama Prasad Mookerjee National Institute of Water and Sanitation (SPM NIWAS), and the INREM Foundation to support a wide range of personnel. These included Anurakshaks and pump operators responsible for operating rural piped water schemes, Water Information and Management Committee members involved in village level decision making, officials from Public Health Engineering Departments who oversee infrastructure and water service delivery, and Panchayati Raj Department officials who anchor decentralised governance.

Through the Hub and Spoke model, they engaged in practical learning on operations and maintenance, water quality monitoring, use of digital platforms such as the Nal Jal Seva App, and community engagement techniques that strengthen accountability. These efforts have led to more reliable water supply, stronger technical proficiency, and deeper community participation, supporting long term sustainability of rural water systems.



# Research on the ECHO Model

India has played a central role in building the global body of research on the ECHO Model. With over 500 peer-reviewed publications worldwide, many emerging from Indian programs, the evidence is clear—ECHO improves knowledge, transforms practice, and enhances outcomes across diverse sectors.

A growing number of studies in leading medical journals such as The New England Journal of Medicine and The Lancet, have documented the impact of the ECHO Model in India's healthcare landscape. From mental health and cancer to tuberculosis and antimicrobial resistance, this approach to capacity building has been rigorously evaluated and consistently proven effective. The research shows that ECHO empowers providers, strengthens systems, and contributes meaningfully to public health outcomes. It addresses complex healthcare challenges through continuous, community-based learning, offering a scalable, sustainable solution.

ECHO India works in close partnership with the Ministry of Health and Family Welfare, Ministry of Agriculture & Farmers' Welfare, and Ministry of Jal Shakti. It is deeply embedded in state-led initiatives across the country. These institutional partnerships and formal endorsements reflect the trust placed in the model's value, relevance, and long-term potential. ECHO India has not only scaled innovation, it has helped shape a new paradigm of how India learns, shares, and grows together.

## A Glimpse of Some Peer Reviewed Publications

### Enhancing cancer care through a knowledge-sharing model: a systematic review of Project ECHO® programmes in India

Authors: Sangeeta Bhuyan, Shikha Yadav, Amit Verma, Shama Bhati, Ankit Anand, Sandeep Bhalla, Apoorva Karan Rai  
Published in *BioMed Central*



### Effectiveness of NIMHANS ECHO blended tele-mentoring model on Integrated Mental Health and Addiction for counsellors in rural and underserved districts of Chhattisgarh, India

Authors: Kanika Mehrotra, Prabhat Chand, Mrunal Bandawar, Mallikarjun Rao Sagi, Sandeepa Kaur, Aurobind G, Aravind Raj, Sumi Jain, Miriam Komaromy, Pratima Murthy, Sanjeev Arora.  
Published in *Asian Journal of Psychiatry* 1 August 2018



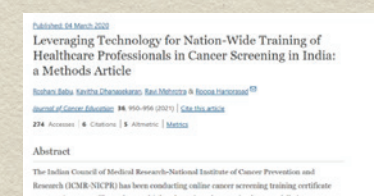
### Impact Evaluation of Technology Driven Mental Health Capacity Building in Bihar, India

Authors: Barikar C Malathesh, Bhavya K Bairy, Channaveerachari Naveen Kumar, P Lakshmi Nirisha, Gopi V Gajera, Praveen Pandey, Narayana Manjunatha, Aurobind Ganesh, Kanika Mehrotra, Binukumar Bhaskarapillai, Durai Murukan Gunasekaran, Sanjeev Arora, Narendra Kumar Sinha, Suresh Bada Math.  
Published in *Journal of General Internal Medicine* in 2019



### Leveraging Technology for Nation-Wide Training of Healthcare Professionals in Cancer Screening in India: a Methods Article

Authors: Roshani Babu, Kavitha Dhanasekaran, Ravi Mehrotra, Roopa Hariprasad  
Published in *Journal of Cancer Education* in 2020



# Events & Conferences

Over the past year, ECHO India supported and organized a series of key events and conferences across major cities in India.

## Insights and Impact: Concluding the Long-COVID Capacity-Building Program

Concluding its capacity-building program on Long-COVID, ECHO India organized a Dissemination and Experience-Sharing Meet for healthcare professionals in Kolkata, West Bengal. The event featured two panel discussions, which saw active participation from Brihanmumbai Municipal Corporation (BMC) and Kolkata Municipal Corporation (KMC). This was followed by an interactive Q&A session and stories of change from the ground.



## Three Years of Transforming Thalassemia Care Across India

ECHO India concluded its three-year nationwide collaborative initiative on Beta Thalassemia and Hemoglobinopathies with an insightful dissemination meeting in New Delhi. The program empowered healthcare professionals to tackle blood disorders and established thalassemia screening and testing as standard across Urban Primary Health Centres, promoting early detection. The program emphasizes community engagement, with healthcare professionals conducting village awareness sessions and referring patients to treatment centres, bridging gaps in care and knowledge and advancing sustainable solutions for hemoglobinopathies.



## Empowering Nurses: A Year of Advancing Cancer Care and Awareness

Concluding its year-long capacity-building initiative on Cancer Prevention, Detection, and Awareness for Nurses, ECHO India organized a dissemination and experience-sharing meet in New Delhi. With 40+ delegates from over 17 states in attendance, the event saw three insightful panel discussions on breast, cervical, and oral cancers. Nursing professionals from across India shared their experiences of how the learning sessions empowered them to enhance diagnosis and screening while promoting awareness in their communities.



## Strengthening Cancer Care Across Communities

Through its Cancer Care Bharat initiative, ECHO India builds local healthcare capacity, enabling early detection, timely referral, and improved cancer care in communities. In 2024, ECHO India conducted a Training of Trainers (ToT) and an Orientation Program in New Delhi, drawing participation from oncology specialists, general practitioners, nurses, and other healthcare professionals from across India. Covering cancer care from prevention to survivorship, these sessions featured curated modules that enhanced clinical understanding and promoted dialogue on collaboration, innovation, and scaling community-based care.



## National Roundtable Summit on Cancer Prevention, Detection, and Awareness

In June 2024, Tata Memorial Centre (TMC), Mumbai and ECHO India organized a National Roundtable Summit on Cancer Prevention, Detection, and Awareness. Under the theme 'Advancing Cancer Prevention: Innovations and Capacity Building', the initiative brought together healthcare officials, medical experts, and key stakeholders to discuss strategies for cancer prevention. Expert-led sessions covered lifestyle modifications, vaccination, early detection methods, multidisciplinary approaches, and the capacity-building of healthcare professionals in prevention and diagnosis.



## Empowering Women, Enriching Wellness

The Directorate of Public Health and Preventive Medicine (DPH) Tamil Nadu, in collaboration with ECHO India, launched a program on Women Wellness with a 2-day Training of Trainers (ToT). Through the ECHO Model, over 40 trainers from Dindigul and Tirupur trained 500 healthcare professionals (Medical Officers, CHOs, VHNs, and ANMs) on maternal and child health and nutrition, highlighting ECHO India's efforts to strengthen provider capacities under Ayushman Bharat and POSHAN Abhiyan.



As we expanded our partnerships and collaborations during the previous year, ECHO India's Partner Launch Trainings (PLTs) saw widespread participation from healthcare providers, social workers, educators, and frontline professionals. We conducted engaging sessions on the ECHO model and its adoption across various focus areas for state NHMs, nursing councils, government departments, and healthcare and academic institutions. These were held in Delhi, West Bengal, Tamil Nadu, Telangana, Bihar, Karnataka, and the Northeastern states of Assam, Nagaland, and Meghalaya.

## Partner Launch Trainings

As we expanded our partnerships and collaborations over the year, ECHO India's Partner Launch Trainings (PLTs) saw widespread participation from healthcare providers, social workers, educators, and frontline professionals. We conducted engaging sessions on the ECHO model and its adoption across various focus areas for state NHMs, nursing councils, government departments, and healthcare and academic institutions. These were held across many states, including Delhi, West Bengal, Tamil Nadu, Telangana, Bihar, Karnataka, and the Northeastern states.



# ECHO Impact Story

## Strengthening Primary Care Through Knowledge:

### The Transformation of Cardiometabolic Syndrome Care in Washim

Washim, an aspirational district in Maharashtra, has long faced a high burden of non-communicable diseases like cardiometabolic syndrome (CMS). To bridge critical care gaps, ECHO India launched a virtual capacity-building program for Medical Officers, in collaboration with the State Institute of Health and Family Welfare (SIHFW).

Through eight interactive sessions, frontline providers engaged in case-based discussions with experts, focusing on early diagnosis, primary care, and timely referrals. *"These sessions help us learn rapidly without the logistical hurdles of physical training,"* said Dr. Rajshree Deshmukh. The format's flexibility allowed practitioners like Dr. Dnyaneshwar Bonde to enhance their skills alongside clinical duties, while Dr. Swapnil Hake noted that Medical Officers now confidently initiate insulin therapy and stabilize patients before referral. The initiative has improved diagnosis, patient outcomes, and referral quality. *"Referrals now come with complete histories and targeted diagnoses,"* shared Dr. Lonkar. For Dr. Digambar Dhole, who manages 125 OPD visits daily, the training proved lifesaving, enabling him to identify three pulmonary embolism cases on time.



Encouraged by the results, SIHFW experts recommend scaling the program to other districts, showcasing how digital, low-resource learning can transform primary healthcare delivery. By making knowledge accessible and learning continuous, ECHO India helps enable healthcare providers to respond more effectively to community needs.

## Bridging the Learning Divide:

### How Mukhtangan and ECHO India Are Transforming Classrooms, One Teacher-Student Bond at a Time



In a crowded municipal school in Mumbai, seven-year-old Ayaan (name changed) sat withdrawn, invisible even in class. His story, a busy mother and an unwell father, mirrored that of many children across India, where students attend school but remain emotionally disconnected. Traditional education reforms focused on infrastructure and textbooks, neglecting the human connection that fuels learning. Founded in 2003, Mukhtangan, led by Elizabeth Mehta, tackled this gap by addressing weak teacher-student bonds, rote learning, and the lack of meaningful feedback. The pandemic worsened disengagement, prompting Mukhtangan to partner with ECHO India for online teacher training using the All Teach, All Learn model. This collaborative, peer-learning approach empowered teachers to reflect, experiment, and share strategies.

Teachers began asking: what do we know about our students beyond grades? They practiced active questioning, group learning, and giving constructive feedback. Rekha Desai (name changed) applied these methods with Ayaan, gradually helping him participate, speak up, and regain his voice. Today, Mukhtangan and ECHO India extend this work to early childhood education and library development, transforming classrooms into spaces of dialogue, curiosity, and connection. The impact is clear: systemic change starts where learning is rooted in relationships and where students feel truly seen.

# From Vision to Impact:

## How ECHO India Enabled a Local Environmental Education Movement in Andhra Pradesh

Over 3.6 billion people live in climate-vulnerable areas, making daily awareness and urgent action on climate change essential. Environmental education is vital for driving this change, but its impact depends on strong grassroots efforts. ECHO India's collaborative learning model helped bridge this gap in Andhra Pradesh, in partnership with Andhra Pradesh National Green Corps (APNGC).

In 2021, Mr. Neelkantaiah, State Coordinator, APNGC, embraced the ECHO Model with its "All Teach, All Learn" approach connecting educators virtually to share and innovate. Under his leadership, the APNGC-ECHO program expanded in districts like Chittoor, deepening student engagement with nature. ECHO India's context-sensitive approach gave teachers practical and adaptable knowledge, making environmental education a part of everyday teaching. Through the Green Schools initiative, schools conducted audits and adopted sustainable practices. The real impact was a mindset shift: teachers took ownership, students became advocates, and communities were engaged. From one educator's vision, the ECHO model nurtured an organic, collective movement.



Mr. Neelkantaiah's journey shows that effective interventions need strong implementation. ECHO India's human-centric, scalable model empowered teachers in Chittoor and beyond to cultivate a culture of sustainability. The APNGC-ECHO India partnership turned environmental education into a grassroots, peer-driven movement, proving that when educators are connected and supported, they don't just spark change, they multiply it.

# Learning to Lead:

## How ECHO is Enhancing TB Care at the Last Mile

*"In order to better serve my community, it is important that I continue to upgrade my knowledge and skills," says Ms. Zabida Mohidin, a dedicated Mid-Level Healthcare Provider (MLHP) from Baramulla.*

Ms. Zabida serves at the Gohaltangpor Health and Wellness Centre, now Ayushman Arogya Mandir (AAM), in Pattan block, Baramulla. With a B.Sc. in Nursing and over five years of experience, she provides care to nearly 3,000 people. Supported by three ASHAs, the centre sees 250–300 patient visits monthly. She notes NCDs like hypertension, diabetes, and anemia are more common than communicable diseases. TB screening has remained a challenge in her community due to stigma and low awareness. To address this, her team conducts TB awareness sessions during Village Health and Nutrition Days (VHND) sessions and dedicates one day a month to TB education. The team also conducts community visits to screen individuals and collect sputum samples for lab diagnosis. A firm believer in continuous learning, Ms. Zabida has attended every ECHO TB training, crediting it for enhancing her skills and improving care. *"The ECHO training program on TB is one of a kind. It has given me valuable skills and insights that I can immediately apply in my work,"* she says. Over her career, she has successfully treated three TB patients and deepened her expertise. *"I've now learned how to screen and test other family members when one is diagnosed with TB,"* she shares.



# “Words of Appreciation”

*“The ECHO platform became transformational. We were able to multiply the number of people we were training in one go. We were also able to keep in touch with them and follow up on how they were delivering care in their respective communities. This multiplier effect was extremely promising”*

**Dr. Pratima Murty**

Director, NIMHANS Bengaluru

*“ECHO Model has provided an engaging platform for educators to exchange best practices and innovative ideas for resolving various field-level issues through the case-based learning approach. The program which was launched for 72 school leaders has been gradually upscaled in a phased manner and has enabled the participants to contribute their knowledge and experience through group discussion, collaborative problem solving, peer interaction and engagement of experts.”*

**Mala Katila**

State Consultant, Samagra Shiksha Assam

*“The program on Farm Journalism for Effective Transfer of Technology was incredibly effective in enhancing my skills. Learning to use various apps for creating and editing short videos was especially beneficial. These tools have significantly improved my interactions with farmers, helping me convey information in a way that’s both engaging and easy to understand. The program has boosted my confidence in sharing knowledge and made me more equipped to communicate effectively with frontline professionals.”*

**Archana Muduli**

Assistant Fisheries Officer, Bhawanipatna, Odisha

*“Through ECHO sessions, I gained the confidence to apply my knowledge in real-world community settings. ECHO training made all the difference, it was incredibly helpful. Unlike specialists who might simply prescribe medication, we, as community health workers, provide personal guidance. We educate people on vital areas like pregnancy care, childcare, geriatric support, and overall well-being. We help them understand the importance of healthy habits and the consequences of negative ones. Through ECHO, we’re not just delivering healthcare; we’re building trust and creating meaningful change in our communities”.*

**Ravi Kumar**

Community Health Officer, Andhra Pradesh

*“Although I teach physical science to my students, I am passionate about environmental conservation. After being introduced to ECHO India, I decided to participate in different activities. I learned many new things from the didactic and case presentations conducted fortnightly. These presentations have inspired me to strive to do my best in activities aimed at biodiversity conservation. Later, like-minded environmental enthusiasts and I formed a society called the ‘Bobbili Green Belt Society’ and are doing our best to keep our town clean and protect biodiversity. ECHO India has helped me significantly and changed my attitude towards the environment for the better.”*

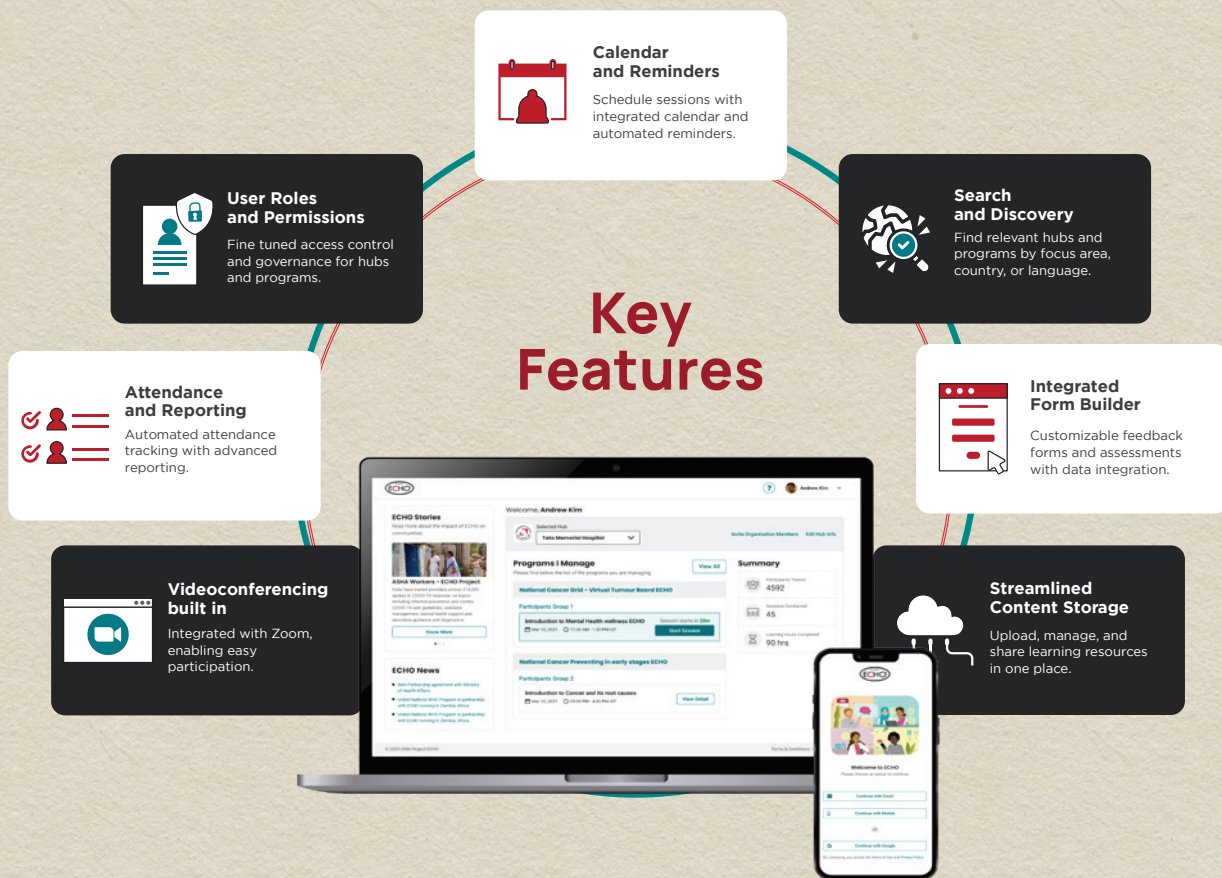
**G Rama Rao**

ZPH School, Manyam District, Andhra Pradesh

*“Being associated with ECHO India’s capacity-building program on Water Quality Management provided me with a wealth of new knowledge about water quality, much of which I was unaware of before. One of the most beneficial aspects was learning how to train frontline workers effectively. This program enhanced my understanding of water quality management, enabling me to address the questions raised by Village Water & Sanitation Committee (VWSC) members and women in the field more confidently and accurately. It significantly boosted my confidence, and I’ve already started applying these learnings by providing Field Testing Kit (FTK) training to women in my community.”*

**Anamika Shrivastava**

Block Coordinator, Narsinghpur



iECHO is a shared digital infrastructure that supports the ECHO movement by eliminating barriers to participation, amplifying impact, and enhancing the operational productivity of our partners. With iECHO, we are ushering in a new era of knowledge-sharing and building a dynamic ecosystem for collective learning and growth.

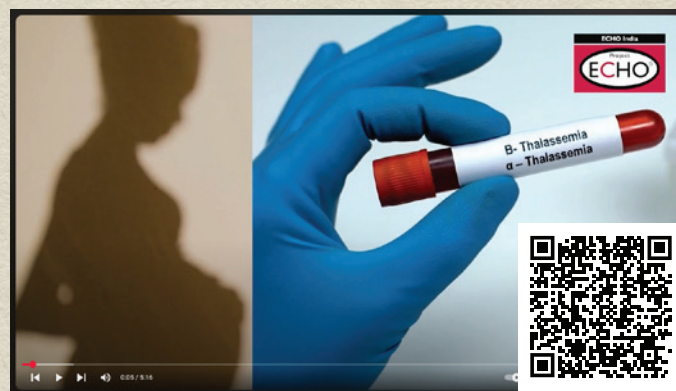
Functioning as a societal platform, iECHO can be applied across a wide range of sectors, healthcare, education, agriculture, and more, to reduce inequities and foster inclusive development. Its design supports collaboration and co-creation, enabling scalable solutions that directly address complex challenges at the grassroots level. By connecting global networks of experts, practitioners, frontline workers, and organizations, iECHO enables real-time collaboration.

This collective approach ensures that best practices are not only shared but also adapted locally, allowing every community to benefit from the most effective solutions regardless of their geographical and resource constraints. Designed to create systemic shifts, iECHO offers a scalable and adaptable platform that supports continuous innovation and sustainable impact across multiple domains. Through iECHO, we continue to accelerate innovation, strengthen capacity-building efforts, and build a future where knowledge flows freely.

# Impact in Motion



Strengthening TB Care Through ECHO



Improving Beta Thalassemia Care with ECHO



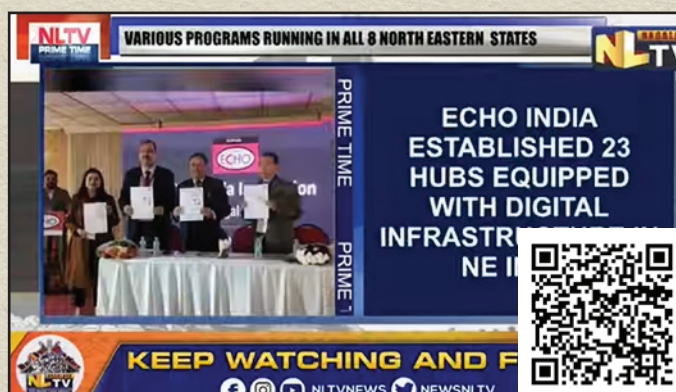
Strengthening Education Through ECHO



Empowering School Leaders in Assam



Podcast on Championing Women & Girls  
in Science



ECHO In Digital Media

# Media & Publications

## The Indians Chronicle



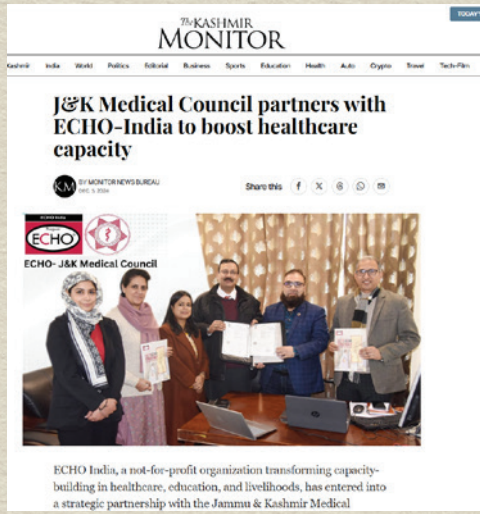
## The Hindu



## The Arunachal Times



## The Kashmir Monitor



## Amar Ujala



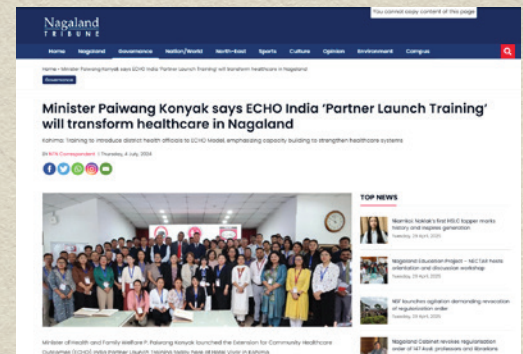
## Veerangana Jhansi News



## Bihar Darshan News



## Nagaland Tribune



# Financial Highlights

## FY 2024-25

### Information On Statutory Registrations



- » Extension for Community Healthcare Outcomes (ECHO INDIA) is registered as a not-for-profit organization under the Indian Trusts Act, 1882 (Reg. No. 2647 dt. 10-07-2008).
- » Extension for Community Healthcare Outcomes (ECHO INDIA) is registered under Section 12A/12AA of the Income Tax Act, 1961. (Reg. AAATE3125EE20214 dated 31-05-2021, valid from AY 2022-23 to AY 2026- 27)
- » Extension for Community Healthcare Outcomes (ECHO INDIA) is registered under Section 80G of the Income Tax Act, 1961. (Reg. No. AAATE3125EF20214 dated 31-05-2021, valid from AY 2022-23 to AY 2026-27)
- » Extension for Community Healthcare Outcomes (ECHO INDIA) is registered under Section 11(1) of the Foreign Contribution (Regulation) Act, 2010 (FCRA Reg. No. 231661661)
- » Extension for Community Healthcare Outcomes (ECHO INDIA) is registered under CSR Provisions of the Companies Act, 2013, with registration number CSR00002612.

### Information On Bankers & Auditors

#### Main Bankers

**Canara Bank**  
No. 1, DDA Building,  
Nehru Place, New Delhi -  
110019

#### FCRA Bankers

**State Bank of India**  
New Delhi Main Branch,  
Parliament Street,  
New Delhi - 110001

#### Auditors

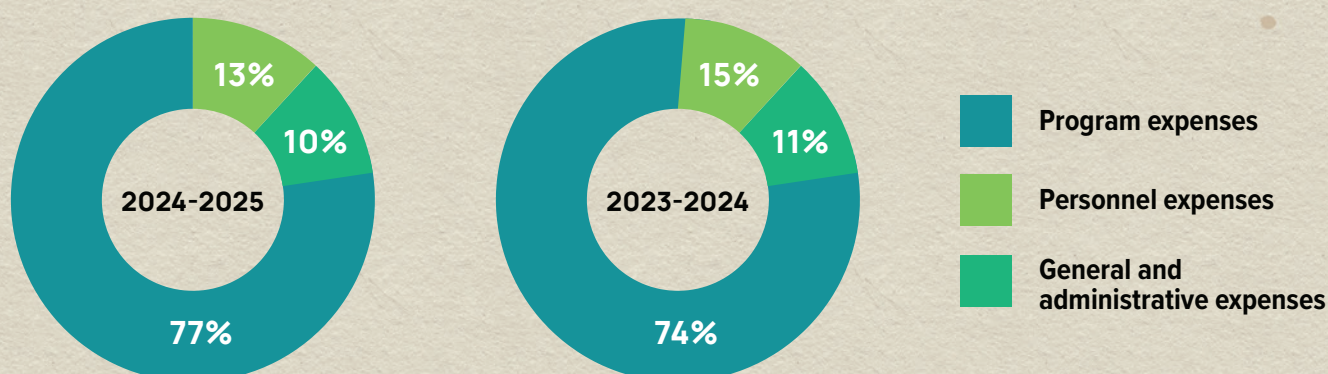
**Walker Chandiok & Co LLP**  
21st floor, DLF Square,  
Jacaranda Marg, DLF Phase II,  
Gurugram, Haryana - 122002

## Abridged Financials

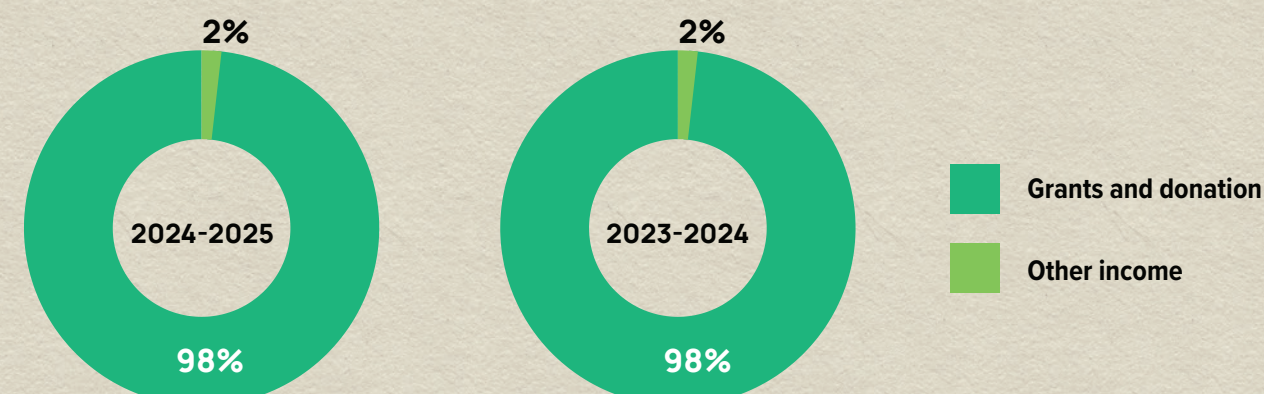
Abridged Income and Expenditure Statement (INR Lacs)		
	2024-2025	2023-2024
Total Income (a)	3,471	3,124
Total Expenditure (b)	3,994	3,432
Excess of Income Over Expenditure (a-b)	-523	-308

Abridged Balance Sheet (INR Lacs)		
	2024-2025	2023-2024
Fixed Assets (a)	351	325
Net Current Assets (Current Assets less Current Liabilities) (b)	1,003	1,703
<b>Total Assets (a+b)</b>	<b>1,354</b>	<b>2,028</b>
Trust Funds, Designated Funds, Provisions and Reserves	1,354	2,028

## Abridged Financials – Expense Distribution



## Abridged Financials – Income Streams

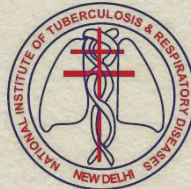


# Our Partners

## Key Government Partners

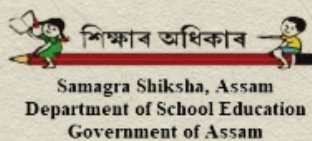


Ministry of Health & Family Welfare  
Government of India



icmr  
INDIAN COUNCIL OF  
MEDICAL RESEARCH

NICPR  
NATIONAL INSTITUTE OF CANCER  
PREVENTION AND RESEARCH



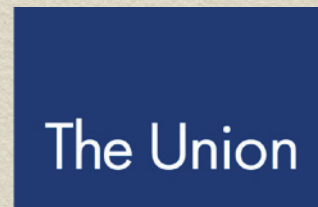
Rashtriya  
Uchchatar  
Shiksha  
Abhiyan



---

## Key Supporters

---



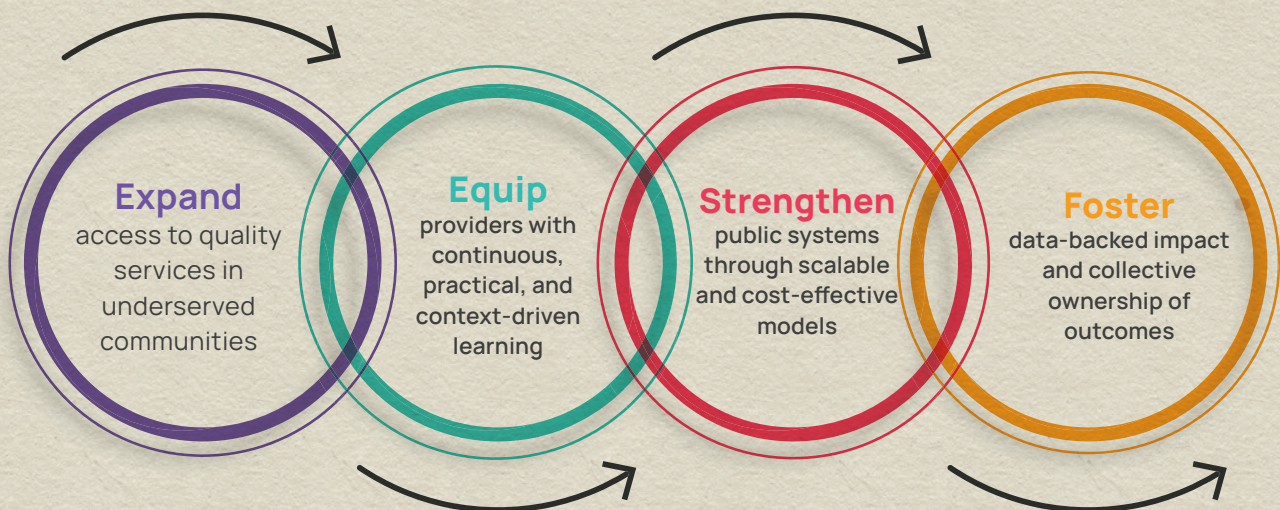
# Seeking Collaborations

At ECHO India, we believe that knowledge should not be limited by geography or privilege. Every provider, whether a frontline health worker in a remote village, a schoolteacher in a government classroom, or a community facilitator working with farmers, deserves access to timely guidance, expert mentorship, and a supportive community of practice. This is the vision that powers the ECHO Model, and the invitation we extend to you.

Through deep partnerships with national institutions, state governments, grassroots organisations, and subject matter experts, ECHO India is building the capacity of thousands of providers across healthcare, education, and agriculture and livelihood. Our programs are active in 28 states and 7 union territories, designed to respond to local needs while enabling national scale.

By using technology to democratise learning and mentorship, we help communities build from within. We support CHOs, ASHAs, school principals, counsellors, agricultural extension workers and many others who are vital to India's wellbeing and resilience. Each session is not just a training but a space where real challenges are discussed, local solutions are co-created, and confidence is built through shared learning.

**By partnering with ECHO India, you can be a part of a growing effort to transform systems sustainably and equitably. As a collaborator, you help:**



We welcome you to share our vision and walk alongside us. Your support can help amplify our reach and deepen our impact where it matters most. Together, let us move knowledge, not people. Let us build capacity, spark collaboration, and create a future where no one is left behind.

**Connect with us at**  
**[partnerships@echoindia.in](mailto:partnerships@echoindia.in)**

## ECHO INDIA

Address: Building No 232A,  
Ground & 1st Floor, Okhla Phase III, Okhla Industrial Estate,  
New Delhi - 110020

**FOR MEDIA & COMMUNICATION**  
[communications@echoindia.in](mailto:communications@echoindia.in)